

Ball Valves

PRODUCT CATALOG



Manual Valve DN 8 – 100 (1/4" – 4")

The Steriflu 942 is a manually operated ball valve with a stainless steel handle with a plastic sleeve.



Features

- End connection extended butt weld ends or clamp ends
- Drainable design with "True ID port opening"
- V-ring stem seals
- EN ISO 5211 mount plate ensures direct assembly of actuators
- Manual handle with locking device
- Standard seat material FDA compliant 21CFR177.1550
- Butt weld ends with controlled delta ferrit content
- Suitable for CIP and SIP cleaning processes
- Antistatic device

Working pressure	
DIN	PS (bar) *
8	63
10	63
15	63
20	63
25	40
32	31
40	25
50	20
65	15
80	12
100	10

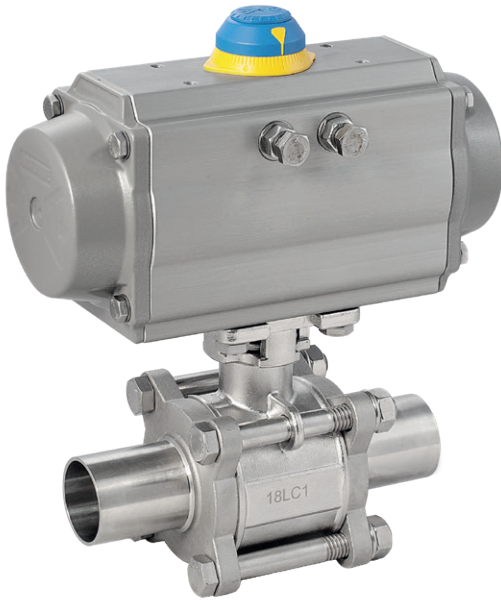
* Fluid group 2 only

Technical Data

Control function:	Manually operated
Max. working pressure:	See table
Max. working temperature:	220°C (428°F) dependent on application
Sealing material:	PTFE full cavity or non-cavity filler
Ball valve material:	Body/Ball/Cap CF3M (316L)
End connection:	Butt weld ends DIN 11850 Butt weld ends ASME BPE Butt weld ends ISO 1127 Clamp ends ASME BPE see page 6 and 7
Surface finish:	Internal 0,6µm polished, electropolished external
Flow rate:	Kv in m ³ /h see page 5

STERIFLU 342

Pneumatically Operated Valve DN 8 – 100 (1/4" – 4")



The Steriflu 342 is pneumatically operated with a piston actuator alternatively single or double acting. The pneumatic actuator has an extruded aluminium housing with internal and external Alodur special hard anodization for corrosion protection.

Features

- End connection extended butt weld ends or clamp ends
- Drainable design with "True ID port opening"
- V-ring stem seals
- EN ISO 5211 mount plate ensures direct assembly of actuators
- Pneumatically operated actuator with optical indication as standard
- Standard seat material FDA compliant 21CFR177.1550
- Butt weld ends with controlled delta ferrit content
- Suitable for CIP and SIP cleaning processes
- Antistatic device

Optional

- Stroke limiter

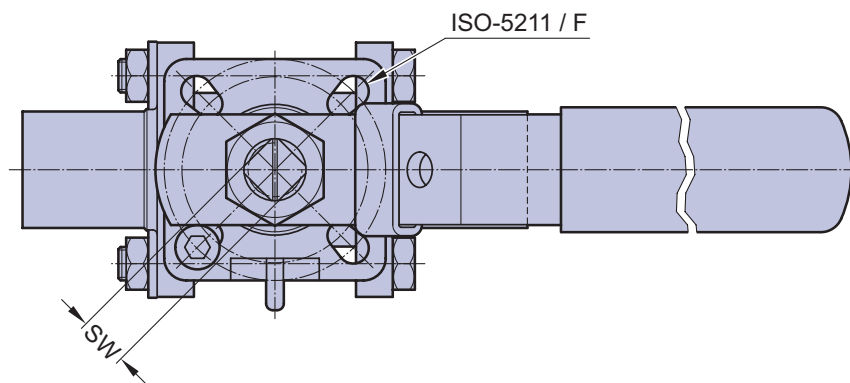
Working pressure	
DIN	PS (bar) *
8	63
10	63
15	63
20	63
25	40
32	31
40	25
50	20
65	15
80	12
100	10

* Fluid group 2 only

Technical Data

Control function:	Pneumatically operated Fail safe close (NC): Cf. 1 Double acting (DA): Cf. 3
Direction	
Control connection:	At Cf. 1 & 3, 90° to flow direction
Max. working pressure:	See table Higher working pressure may be achieved with different actuator. Please consult a SED factory representative for working pressure above the indicated maximum.
Max. working temperature:	160°C (320°F) dependent on application
Control pressure:	6 – 8 bar (87- 115 psi)
Sealing material:	PTFE full cavity or non-cavity filler
Ball valve material:	Body/Ball/Cap CF3M (316L)
End connection:	Butt weld ends DIN 11850 Butt weld ends ASME BPE Butt weld ends ISO 1127 Clamp ends ASME BPE see page 6 to 8
Surface finish:	Internal 0,6µm polished, electropolished external
Flow rate:	Kv in m ³ /h see page 45

All versions				
DN	NPS	Top flange EN ISO 5211		Weight
DIN	INCH	F	SW	Kg
8	1/4"	F03-F04	9	0,6
10	3/8"	F03-F04	9	0,6
15	1/2"	F04-F05	11	0,7
20	3/4"	F04-F05	11	0,9
25	1"	F05-F07	14	1,2
32	1 1/4"	F05-F07	14	1,8
40	1 1/2"	F05-F07	14	2,9
50	2"	F07-F10	17	4,3
65	2 1/2"	F07-F10	17	8,6
80	3"	F07-F10	17	12,4
100	4"	F10-F12	22	21,0

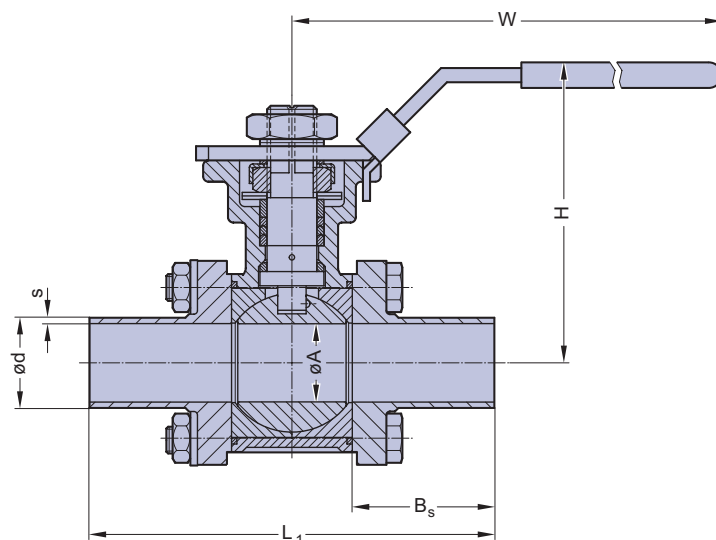


DN	NPS	Torque *	Kv-Value (m3/h)	
			Butt weld ends / Clamp ends ASME BPE	Butt weld ends DIN / ISO
DIN	INCH	(Nm)		
8	1/4"	9	-	7,0
10	3/8"	9	-	7,0
15	1/2"	10	9,0	13,0
20	3/4"	11	26,0	34,0
25	1"	16	55,0	60,0
32	1-1/4"	25	-	94,0
40	1-1/2"	27	170,0	213,0
50	2"	54	349,0	366,0
65	2-1/2"	73	510,0	595,0
80	3"	130	893,0	935,0
100	4"	158	1654,0	1700,0

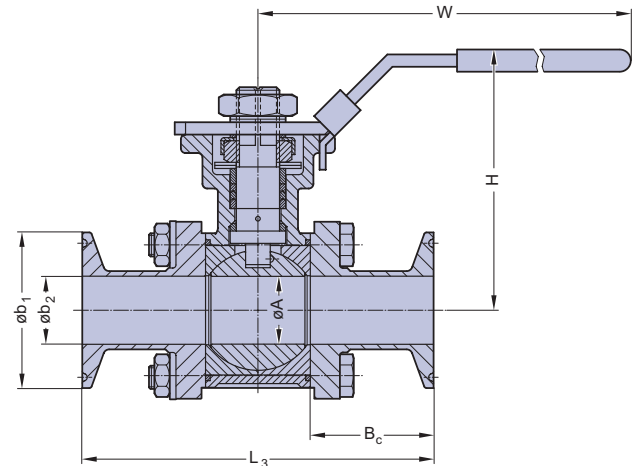
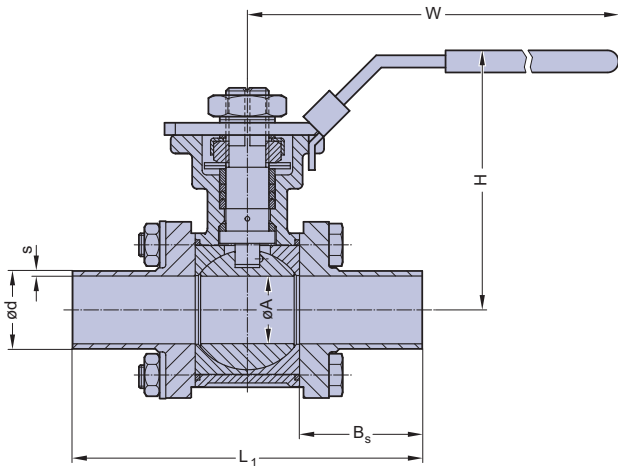
* incl. 30% safety margin

DN	NPS	Butt weld ends DIN 11850 series 2 (Code 42)						
DIN	INCH	L1	Bs	Ød	S	ØA	W	H
8	1/4"	-	-	-	-	-	-	-
10	3/8"	135	32,75	13	1,5	10	130,7	66,8
15	1/2"	135	36,5	19	1,5	16	130,7	75,6
20	3/4"	165	40	23	1,5	20	165,6	84,6
25	1"	165	40	29	1,5	26	165,6	84,6
32	1 1/4"	165	43,5	35	1,5	32	187	117
40	1 1/2"	165	43,5	41	1,5	38	187	117
50	2"	190	46,4	53	1,5	50	187	124,5
65	2 1/2"	205	56	70	2,0	66	265	162,2
80	3"	265	64,5	85	2,0	81	265	169,2
100	4"	306	61	104	2,0	100	393	189,5

DN	NPS	Butt weld ends ISO 1127 (Code 40)						
DIN	INCH	L	Bs	Ød	S	ØA	W	H
8	1/4"	135	32,75	13,5	1,6	10,3	130,7	66,8
10	3/8"	135	36,5	17,2	1,6	14	130,7	75,6
15	1/2"	165	40	21,3	1,6	18,1	165,6	84,6
20	3/4"	165	40	26,9	1,6	23,7	165,6	84,6
25	1"	165	43,5	33,7	2,0	30,5	187	117
32	1 1/4"	165	43,5	42,4	2,0	39,2	187	117
40	1 1/2"	190	46,4	48,3	2,0	45,1	187	124,5
50	2"	205	56	60,3	2,0	57,1	265	162,2
65	2 1/2"	265	64,5	76,1	2,0	72,9	265	169,2
80	3"	265	64,5	88,9	2,3	85,7	393	189,5
100	4"	306	61	114,3	2,3	111,1	393	189,5

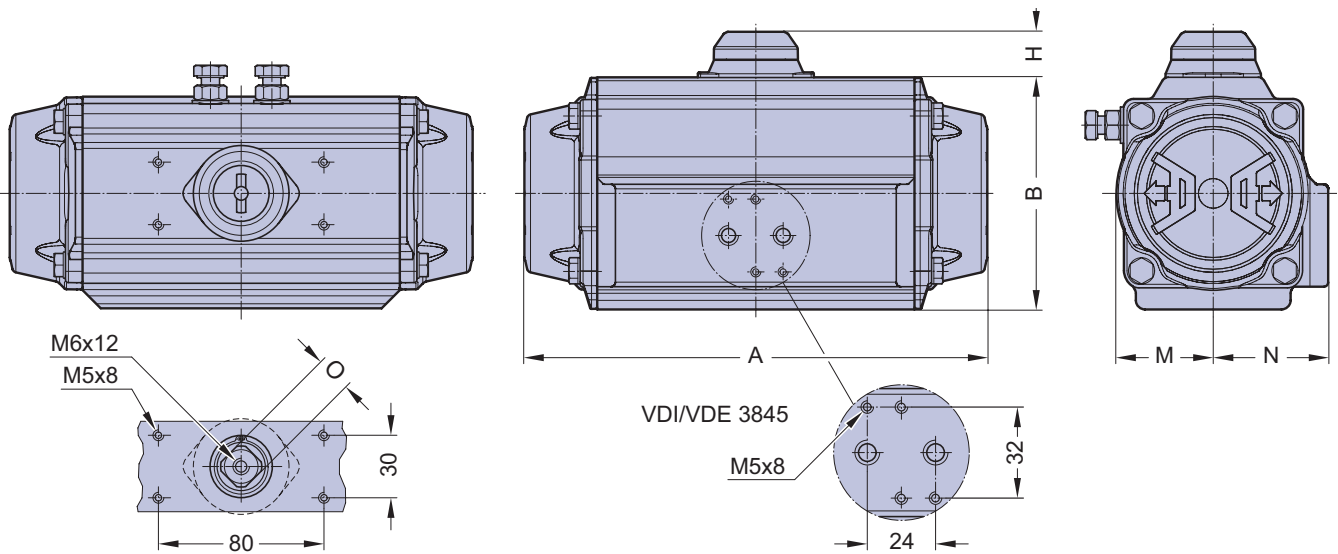


DN	NPS	Butt weld ends ASME BPE (Code 45)						
DIN	INCH	L1	Bs	Ød	S	ØA	W	H
15	1/2"	135	32,75	12,7	1,65	9,4	130,7	66,8
20	3/4"	135	36,5	19,05	1,65	15,75	130,7	75,6
25	1"	165	40	25,4	1,65	22,1	165,6	84,6
40	1 1/2"	165	43,5	38,1	1,65	34,8	187	117
50	2"	190	46,4	50,8	1,65	47,5	187	124,5
65	2 1/2"	205	56	63,5	1,65	60,2	265	162,2
80	3"	265	64,5	76,2	1,65	72,9	265	169,2
100	4"	306	61	101,6	2,10	97,4	393	189,5



DN	NPS	Clamp ends ASME BPE (Code 545 / 745)						
DIN	INCH	L3	Bc	b1	b2	ØA	W	H
15	1/2"	89,1	32,8	25	9,4	9,4	130,7	66,8
20	3/4"	101,6	36,8	25	15,75	15,75	130,7	75,6
25	1"	114,5	40,4	50,39	22,1	22,1	165,6	84,6
40	1 1/2"	140,1	43,5	50,39	34,8	34,8	187	117
50	2"	159,0	47,2	63,91	47,5	47,5	187	124,5
65	2 1/2"	174,0	43,5	77,39	60,2	60,2	265	162,2
80	3"	193,2	47,1	90,91	72,9	72,9	265	169,2
100	4"	226,0	49,5	118,92	97,4	97,4	393	189,5

Actuator type	051	101	201	251	301	351	401	451
ISO Flange	F04	F04/F05	F05/F07	F05/F07	F07/F10	F07/F10	F07/F10	F10/F12
Air connection	G 1/8	G 1/8	G 1/8	G 1/8	G 1/4	G 1/4	G 1/4	G 1/4
A	136,0	153,5	203,5	241,0	259,0	304,0	333,0	394,5
B	69,0	85,0	102,0	115,0	127,0	145,0	157,0	177,0
H	20	20	20	20	20	30	30	30
M	29,0	36,0	42,5	49,5	55,5	64,0	69,5	80,0
N	43,0	48,5	50,5	56,5	63,0	72,0	77,0	86,0
O	11	11	17	17	17	27	27	27
Weight (kg)								
DA	1,0	1,6	2,7	3,7	5,2	8,0	9,8	14,0
NC, NO	1,1	1,7	3,1	4,3	6,1	9,3	12,0	17,0



Ordering Key



1	2	3	4	5	6.1	6.2	7
Type	Size	Ball valve material	Ball valve connection	Sealing material	Actuator control function	Actuator type	Surface roughness of the bodies in Ra

Pos.	Description	Code	Specification
1	Type:	342 942	Aluminium actuator, pneumatic Stainless steel actuator, manual
2	Size:	15 - 100	DN 15, 20, 25, 32, 40, 50, 65, 80, 100
3	Ball valve material:	7A	Body/Ball/Cap 1.4404/316L, CF3M Investment cast
4	Ball valve connection:	40 42 45 545 745	Butt weld end acc. EN ISO 1127 (DIN 11866 Series B) Butt weld end acc. DIN 11850 Series 2 (DIN 11866 Series A) Butt weld end acc. ASME BPE MFS length (DIN 11866 Series C) Clamp ASME BPE, for tube ASME BPE, face to face ASME BPE Table DT-4.4.1-1 Clamp ASME BPE, for tube ASME BPE, face to face, MFS length
5	Sealing material:	3F 3S	PTFE, FDA compliant, full cavity sealing PTFE, FDA compliant, standard sealing
6.1	Actuator control function:	- 1 2 3	Manually operated Normally closed (NC) Normally open (NO) Double-acting (DA)
6.2	Actuator type:	T 051 101 201 251 301 351 401 451	Stainless steel, manually operated Aluminium actuator size 051 Aluminium actuator size 101 Aluminium actuator size 201 Aluminium actuator size 251 Aluminium actuator size 301 Aluminium actuator size 351 Aluminium actuator size 401 Aluminium actuator size 451
7	Surface roughness of the bodies in Ra (µm):	07 SF1	Mech. Polished Ra ≤ 0,6 µm Mech. polished Ra ≤ 0,51 µm (20µ-inch), ASME BPE Table SF-2.4-1



Notes



SAMSON AT A GLANCE

STAFF

- Worldwide 4,300
- Europe 3,300
- Asia 500
- Americas 200
- Frankfurt am Main, Germany 1,800

MARKETS

- Chemicals and petrochemicals
- Power and energy
- District heating and cooling, building automation
- General industry
- Industrial gases
- Food and beverages
- Metallurgy and mining
- Oil and gas
- Pharmaceuticals and biotechnology
- Marine equipment
- Water and wastewater
- Pulp and paper

PRODUCTS

- Valves
- Self-operated regulators
- Actuators
- Valve accessories
- Signal converters
- Controllers and automation systems
- Sensors and thermostats
- Digital solutions

SALES SITES

- More than 50 subsidiaries in over 40 countries
- More than 200 representatives

PRODUCTION SITES

- SAMSON Germany, Frankfurt, established 1916
Total plot and production area: 150,000 m²
- SAMSON France, Lyon, established 1962
Total plot and production area: 23,400 m²
- SAMSON Turkey, Istanbul established 1984
Total plot and production area: 11,053 m²
- SAMSON USA, Baytown, TX, established 1992
Total plot and production area: 9,200 m²
- SAMSON China, Beijing, established 1998
Total plot and production area: 10,138 m²
- SAMSON India, Pune district, established 1999
Total plot and production area: 18,000 m²
- SAMSON Russia, Rostov-on-Don, established 2015
Total plot and production area: 5,000 m²
- SAMSON AIR TORQUE, Bergamo, Italy
Total plot and production area: 27,684 m²
- SAMSON CERA SYSTEM, Hermsdorf, Germany
Total plot and production area: 14,700 m²
- SAMSON KT-ELEKTRONIK, Berlin, Germany
Total plot and production area: 1,060 m²
- SAMSON LEUSCH, Neuss, Germany
Total plot and production area: 18,400 m²
- SAMSON PFEIFFER, Kempen, Germany
Total plot and production area: 35,400 m²
- SAMSON RINGO, Zaragoza, Spain
Total plot and production area: 18,270 m²
- SAMSON SED, Bad Rappenau, Germany
Total plot and production area: 10,370 m²
- SAMSON STARLINE, Bergamo, Italy
Total plot and production area: 26,409 m²
- SAMSON VETEC, Speyer, Germany
Total plot and production area: 27,090 m²



SED Flow Control GmbH
Am Schaffbaum 2 · 74906 Bad Rappenau, Germany
Phone: +49 7264 921 0 · Fax: +49 7264 921 21
E-mail: info@sed-flowcontrol.com · Internet: www.sed-flowcontrol.com